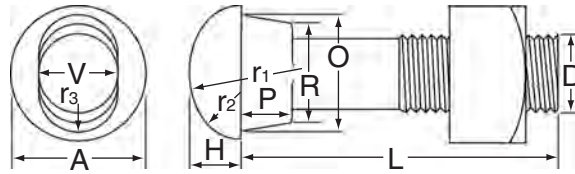


Track Bolts

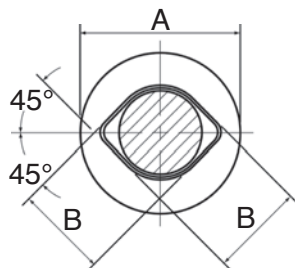
Diam. "D"	Length "L"	Avg. no. in 100# can
inches	inches	pieces
1/2	1-3/4	478
1/2	2	478
1/2	2-1/4	417
5/8	2-1/2	238
3/4	3	139
3/4	3-1/2	134
3/4	4	125
3/4	4-1/2	120
7/8	4-1/2	80
7/8	5	77
1	5	55
1	5-1/2	52
1	6	50
1-1/16	6	47
1-1/16	6-1/2	45
1-1/8	6-1/2	36



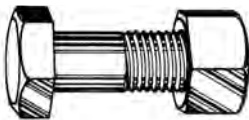
Button head oval neck track bolts are made with oval necks and button heads to be used for splice bar connections. The oval neck fits into the oval hole in the connector bar, thus allowing tightening of the nut without the use of a second wrench to keep the bolt from turning. These bolts are manufactured per ASTM A-183 specifications to both a heat-treated (Grade 2) and an untreated (Grade 1) designation.

Track bolts come with heavy square nuts, and are packed in cans containing 200 lbs. of bolts and nuts. The table at left shows the sizes normally stocked by Harmer. In addition, Harmer stocks longer length track bolts (for heel blocks and cast frogs), and can supply special size track bolts on request.

Diamond neck track bolts are stocked in the sizes shown below.



Diam.	Length	Avg. no. in 100# can
inches	inches	pieces
7/8	4-1/2	80
7/8	5-1/2	70
1	5-1/4	50
1	5-3/4	50



Hex head bolts are usually supplied to ASTM A-325 specifications and are mainly used for crane rail joint bars with tight joints.



Square head bolts are used for heel blocks and the toe end of self-guarded frogs, and can be supplied with cotter pins for use in switch rods. They are manufactured to SAE Grade 5 specifications.

Railway spring washers are made from high grade steel and are designed to maintain bolt tension under all conditions. They are available in two primary designs.



AREMA



Plain Pattern