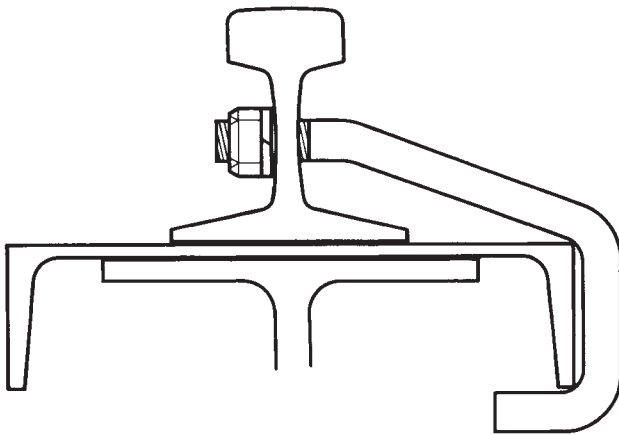
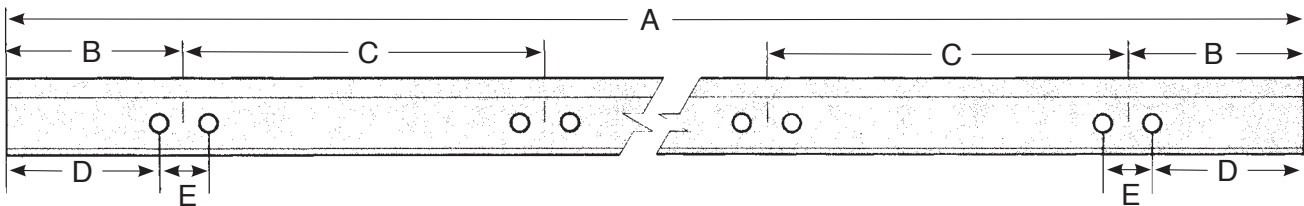


HOOK BOLTS



Hook bolts are very commonly used to attach lighter rails (usually up to 85 lbs.) to channels (as shown at left) or directly onto a crane rail beam. They are usually threaded to allow up to one half inch lateral adjustment in either direction, and come complete with hex nuts and lockwashers. When ordering, specify rail section, bolt diameter, and the size and weight of supporting beam or channel.

Hook bolts are typically drilled in pairs four inches apart every two feet. Unless otherwise specified, we drill these holes 1/8 inch larger than the diameter of the hook bolt, and the spacing will be as shown in the table below. Typically the hook bolts are the same diameter as that used for the splice bars. (Hole elevation is the same as for splice bar holes.)



Remaining holes
on 24" centers

Hook Bolt Spacing *						
Rail Weight	A	B	C	D	E	No. holes per rail
12 lb to 60 lb	20'	14"	22"	12"	4"	20
12 lb to 60 lb	30'	14"	22"	12"	4"	30
25 lb to 60 lb	40'	14"	22"	12"	4"	40
60 lb to 80 lb	33'	18"	24"	16"	4"	32
80 lb to 85 lb	39'	18"	24"	16"	4"	38

*See pages I-5 thru I-12 for rail end drilling.