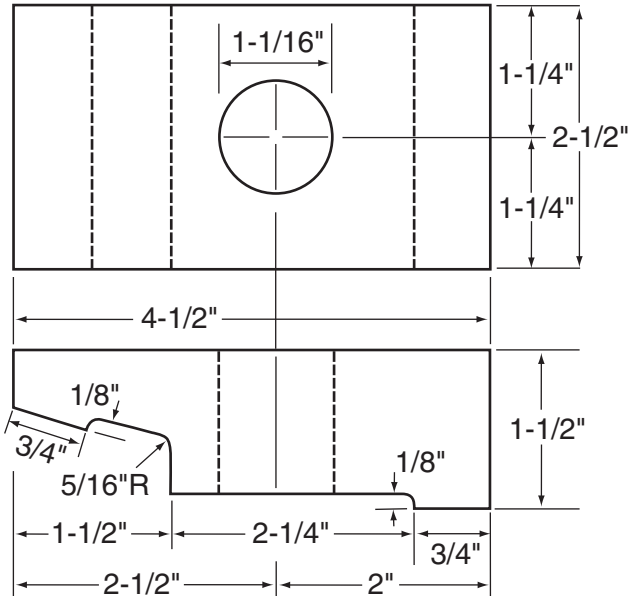
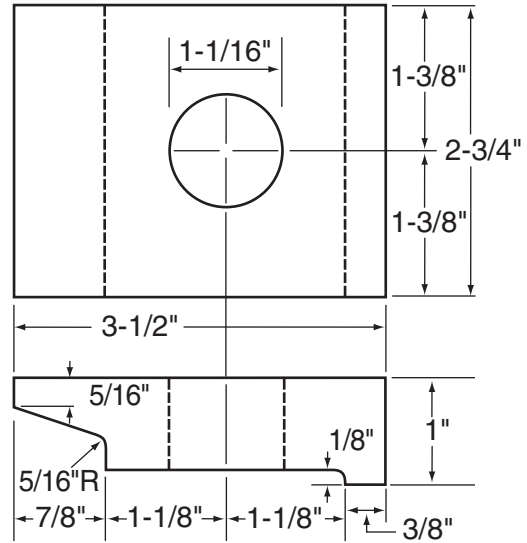


# ONE-PIECE RAIL CLIPS, CRANE STOPS



No. 171 Weight - 3.60 lbs.  
For 171 lb. Crane rail.

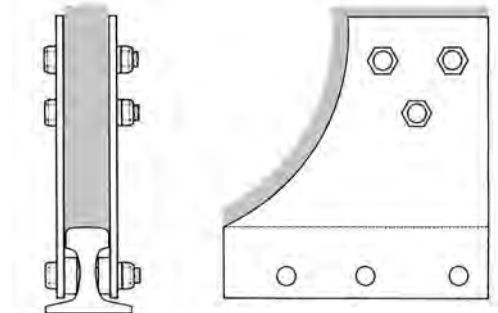


No. 175 Weight - 2.19 lbs.  
For 175 lb. Crane rail.

## Crane Stops

This **Heavy-Duty Crane Stop** is for use on all rail sizes (up to and including 175-lb.) and especially where large cranes are operating. It is fabricated to necessary height and contour to correspond with the wheel diameter of the crane. Specify rail size and wheel diameter when ordering.

Several other types of crane stops are also available. Lighter duty stops, and stops designed to contact a bumper mounted on the crane are two varieties commonly requested.



## Cushion-Slide Crane Stops



Drag plates allow wedge to slide some distance to absorb impact. On smaller sizes of rail, plates may interfere with rail hook bolts. Allow sufficient sliding distance between cranes. Stopping distance depends on weight and speed of crane. Do not use at end of crane run.



### Wheel Contact Type

Wedges are made for a specific wheel diameter. Plates are cut to fit a specific rail size and section.

### Bumper Contact Type

Fits most standard crane bumpers. Wedge stands 15" above top of rail. Underside of crane bumpers should be no more than 12" above top of rail. Plates are cut to fit a specific rail size and section.