

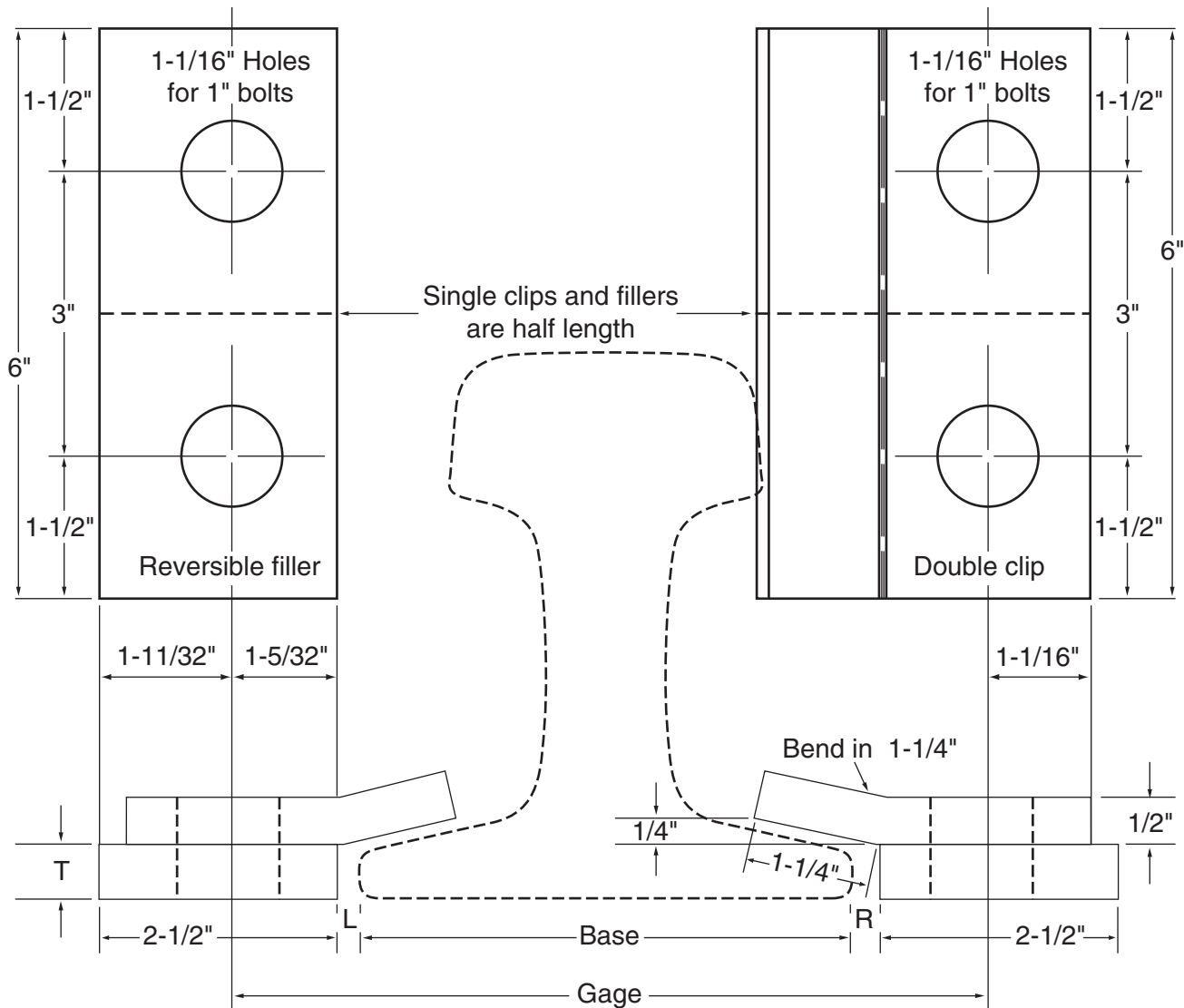
# RAIL CLAMPS FOR CRANE RAILS



## Clamp and Reversible Filler, Loose Fit ("Floating")

No. 205 – Single

No. 206 – Double



Rail Sec.	Base Width	Gage $\text{C}\checkmark$ to $\text{C}\checkmark$ Holes	Filler Thickness (T)	Est. Wt. Clamp		Est. Wt. Filler	
				Single	Double	Single	Double
104-CR	5"	7-3/4"	5/8"	1.6 lb	3.2 lb	1.3 lb	2.6 lb
105-CR	5-3/16"	8"	1/2"	1.6 lb	3.2 lb	1.05 lb	2.1 lb
135-CR	5-3/16"	8"	5/8"	1.6 lb	3.2 lb	1.3 lb	2.6 lb
171-CR	6"	8-3/4"	3/4"	1.6 lb	3.2 lb	1.6 lb	3.2 lb
175-CR	6"	8-3/4"	5/8"	1.6 lb	3.2 lb	1.3 lb	2.6 lb

NOTE: Clearances L (left) and R (right) can be varied by reversing the filler.