

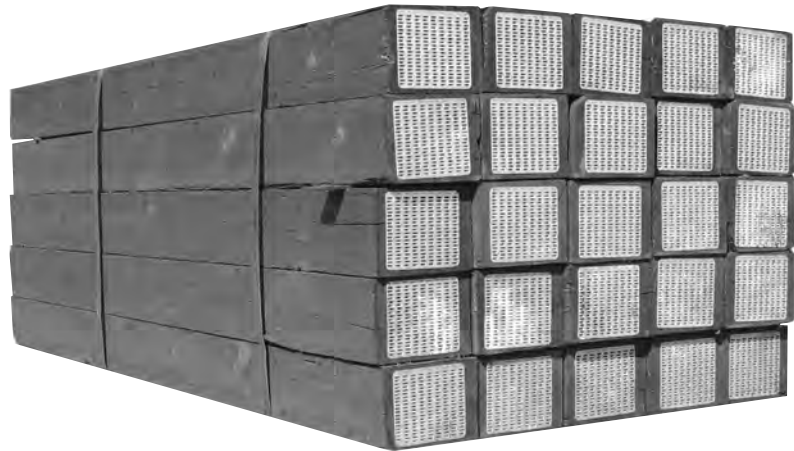
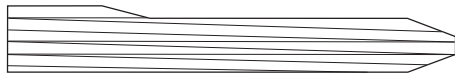
WOOD TIES, TIE PLUGS



Tie plugs are for filling holes in new or used cross ties where spikes have been removed. The plugs are sold in bundles of 500, and are normally 5/8" square and 4-3/4" long. They are available in both treated and untreated cedar.

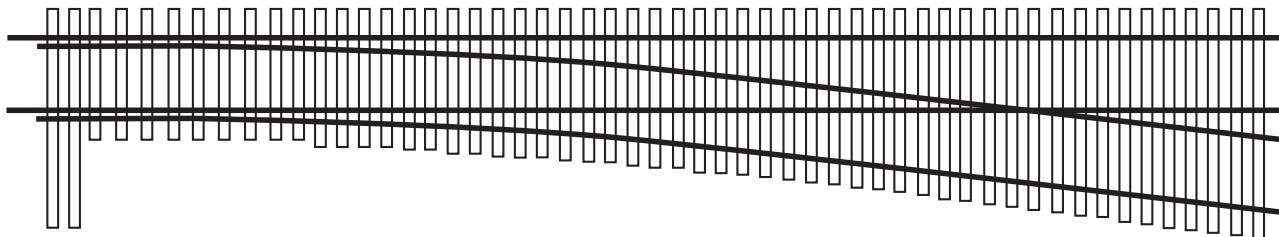
Weight 20 lbs/bndl. (treated)
18 lbs/bndl. (untreated)

We stock "headed" plugs as shown below.



Pressure treated **cross ties** for standard railroad gage are usually supplied in lengths of 8' or 8' 6". They are cut with cross sections of either 6" X 8", 7" X 8", or 7" X 9". Ties are available in several different species of wood, and hardwood ties are often furnished with end plates to reduce splitting. In addition to new ties, relay quality used ties are available.

The table below shows a bill of switch ties for standard gage turnouts with frog numbers between six and eleven. These quantities and lengths are per AREMA specifications with tie lengths rounded up to the nearest 1' multiple. (The board measure shown is based on ties of a 7" x 9" cross section.) Ties are also available in sets with slightly wider spacing between ties, which is usually sufficient for industrial trackage.



Bill of Switch Ties for Turnouts with Straight Switches*

Frog No.	Length of Switch Rail	Toe Length to 1/2" Pt.	Lead P.S. to 1/2" Pt.	Lengths and Quantities of Ties (Lengths in 1'-0" Multiples)									Quant. of Ties	Board Measure
				9'	10'	11'	12'	13'	14'	15'	16'	17'		
6	11'0"	3'9"	47'6"	4	9	5	5	3	3	5	5	2	41	2683
7	16'6"	4'8-1/2"	62'1"	7	13	6	5	3	4	6	6	2	52	3329
8	16'6"	5'1"	68'0"	7	13	6	6	4	5	7	6	3	57	3701
9	16'6"	6'4-1/2"	72'3-1/2"	7	13	7	7	6	5	8	6	4	63	4127
10	16'6"	6'5"	78'9"	7	15	8	7	6	6	7	8	4	68	4452
11	19'6"	7'0"	83'6"	9	14	9	8	7	6	8	8	4	73	4762

*No. 11 shown is for curved switch