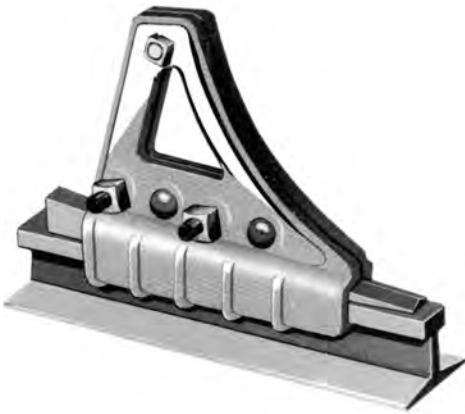


WHEEL STOPS



Model CS-2 Self Tightening Type

Durable self-tightening wheel stops use tapered wedges between the assembled castings and rail head, thus insuring perfect alignment to rail size and providing self-tightening action. This stop is assembled on head of rail by tightening five bolts, driving wedge from the rear between the assembled castings and rail head until tight. Spacer washers are provided to allow for varying head widths. Fits all rail sizes 60 to 141 lbs. Weight 220 lbs/pr.

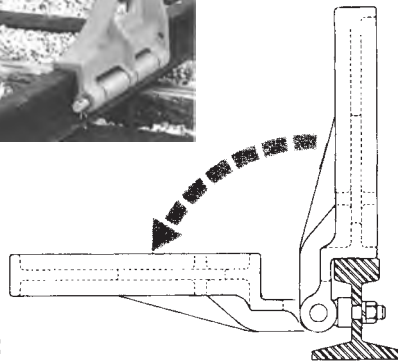
Model SF Cushioned Type

Model SF is a heavy-duty wheel stop which utilizes the cushioning ability of the cross ties and ballast to absorb impact. It also employs the car's weight for additional braking friction on the rail. It is made of all welded steel construction and requires tightening only four bolts for installation of each pair. Fits all rail sizes 60 to 141 lbs. Weight 350 lbs/pr.



Model CS-60 Hinged Type

Model CS-60 is a hinged-type car stop designed for permanent installation on either flush or exposed rails. In the raised position, the CS-60 protects workers, warehouse doors, crossover walks, etc., or it swings down out of the way. The CS-60 may be padlocked in either the up or down position. Specify rail size when ordering. Weight 180 lbs/pr.



Caution For All Wheel Stops:

1. For use on level track only.
2. For use with standard size freight cars only. Do not use with wheels less than 33" diameter.
3. Do not use on overhead crane or other non-railroad vehicles.
4. If used on flush rail, rail must be fully exposed for proper installation.
5. Wheel stops must always be used in pairs with each stop in exact alignment with the other.
6. Car speed at impact must not exceed normal switching speeds.
7. Check stops periodically to be sure bolts are tight.
8. Failure to adhere to these instructions can cause product to fail.