

TRACK REPAIR EQUIPMENT



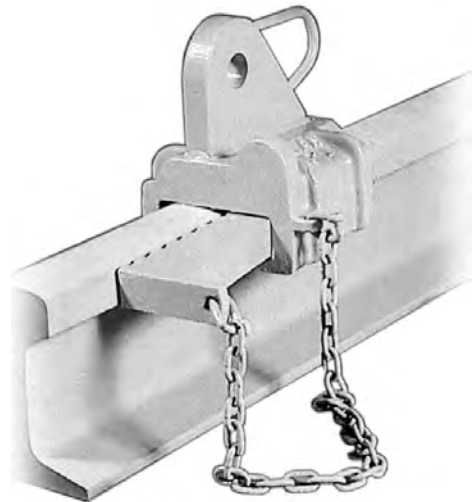
Anti-Slip Rail Tongs are used on cranes for rail handling projects. They will lift any 39 foot tee rail section up to and including 155 lb rail and crane rail up to 171 lb by either the head or the base. No adjustments are necessary to handle various sizes of rail. Tongs are designed for lifting, not dragging. The anti-slip feature of the tongs is due to the sliding toggle action of the links when a rail is lifted. In this way the angularity of the toggle links is never less than 90 degrees with respect to each other. Weight - 60 lbs.



Clamping Rail Tong for crane rail 135 lb., 171 lb. and 175 lb. Load capacity 4000 lbs. Lift only—no dragging. Weight 60 lbs.



Rail Tugger has a self-locking wedge to tightly grab rail for easy pulling and positioning of rail lengths. Handles rails from 100 to 141 lbs/yd. Weight 40 lbs.



Rail-Pull brings rail back into gage after derailment so rerailling can proceed. Cars can freely pass over rail-pull clamp plates. Weight 76 lbs.