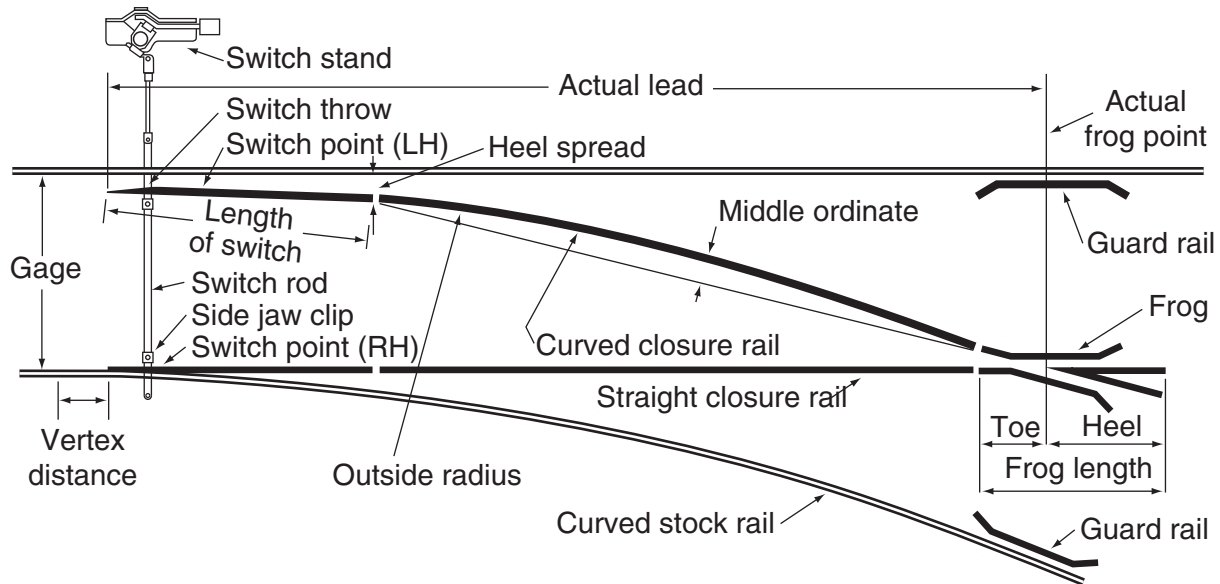


TURNOUTS



Standard Complete Turnout



The following pages show the standard design of the various components that make up a turnout. Designs shown are those most commonly specified, and can be modified to accommodate individual requirements. Turnouts for mining and tunneling applications can be mounted on steel ties and pre-assembled, or they can be shipped in components for assembly on site.

Track-Work Formations



Diamond Crossing



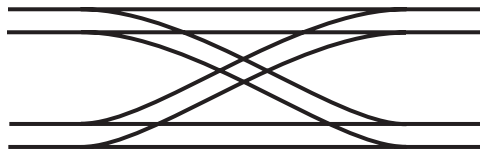
Left Hand Crossover



Straight Crossing



Left Hand Turnout



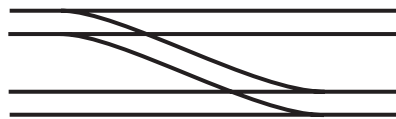
Double Hand Crossover



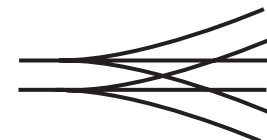
Right Hand Turnout



Equilateral Turnout



Right Hand Crossover



3 Way Turnout